

Your Path to Careers around the Globe

2026 CHEJU HALLA UNIVERSITY



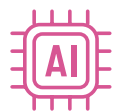


STUDY IN JEJU, STAY IN JEJU!

Why choose Cheju Halla University?



Korea's First University
Operating 2·3·4-Year
Bachelor's Degree Systems



AI-Based Educational
Capabilities Leading Digital
Transformation



Practical Education
Infrastructure Centered on
Industrial Sites



Specialized University for
Major-Tailored Employment



Industry-Academic
Cooperation Model Based on
Technology Commercialization



Global Education
Internationalization Certified
University

Cheju Halla University

Where dreams are born, nurtured, and achieved.

Since its establishment in 1969, Cheju Halla University has evolved into a distinguished private institution of higher education. Over more than half a century, the university has demonstrated sustained commitment to academic excellence and innovation.

In response to the transformative challenges of the Fourth Industrial Revolution, we have adopted the “University 5.0” framework, ensuring that we cultivate professionals who can lead an increasingly technology-driven yet human-centered society.

To ensure our educational standards meet and exceed global standards, Cheju Halla University has implemented a distinctive educational approach centered on the “Learning 5.0” system that emphasizes self-directed and inquiry-based learning.

Our university maintains strong partnerships with prestigious institutions across the United States, Australia, Europe, Japan, and China. These strategic alliances enable our students to meaningfully engage with diverse academic communities and broaden their international perspectives.

We offer dual degree programs and integrated curricula with renowned partner universities in specialized fields including tourism management, nursing and healthcare, and information technology. Furthermore, we have established overseas employment programs in collaboration with industries in Japan and Australia, strengthening our position as a specialized institution with genuine global reach.

Cheju Halla University is dedicated to providing students with the resources, opportunities, and support necessary to realize their aspirations. We encourage our students to embrace challenges, pursue ambitious goals, and develop the confidence required to succeed in an interconnected world. The university remains steadfast in its commitment to fostering the continued growth and future success of every one of its students.



President | Cheju Halla University
Sung-Hun Kim, Ph.D.

김성훈



STUDY IN JEJU

Cheju Halla University International Student Education Program



Types

✓ Korean Language Track

✓ English Track

✓ Internship–Employment Convergence WORK & STUDY Degree Program

✓ Glocal Convergence Talent Degree Program

Major Specialized Courses

✓ Internship–Employment Convergence WORK & STUDY Degree Program [International School of Tourism & Hospitality]
※ Regional Visa-linked 'Tourism Service Specialist' Major Education + Field Training → Employment after Graduation

✓ Global Nursing Talent Training Course [School of Nursing]

✓ Foreign Caregiver Training Course [School of Social Welfare]

✓ AI Convergence Digital Art Talent Training Course [School of AI Convergence]

✓ E-7-4 Degree Course for Foreign Workers in the Province

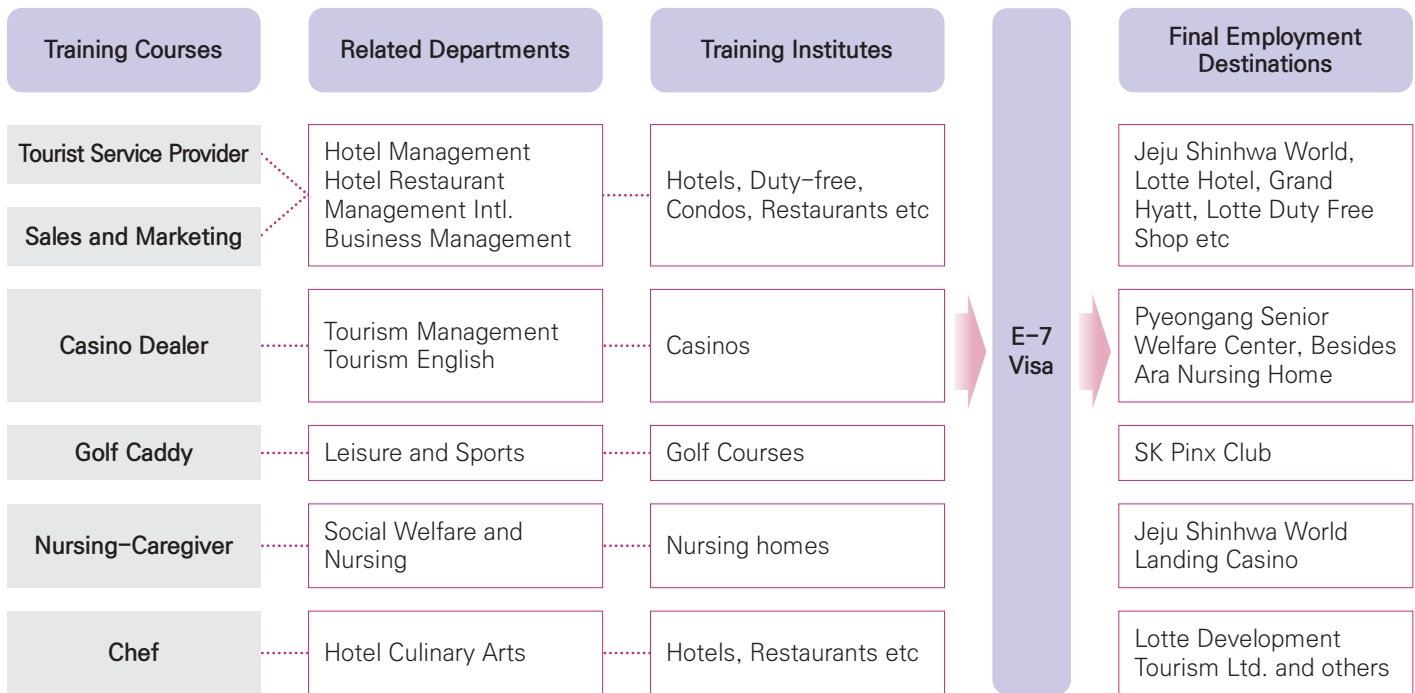
✓ Extracurricular Education Curriculum

✓ Joint Linkage Course with Overseas Universities

✓ "Cheju Halla University – Nankai University (China) – Macao University of Tourism" International Campus CNM

✓ Internship–Employment Convergence WORK & STUDY Degree Program

School of International
Tourism & Hospitality



✓ Foreign Caregiver Training Course

School of Social Welfare

- Dept. of Social Welfare (4-year program) / Dept. of Social Welfare (2-year program)
+ Medical Welfare Research Institute (short-term course)





HALLA DIGITAL ART MUSEUM

Program Overview

	Practical Track (For career-focused students)	Creative Track (For artist-creator oriented students)
3 months	Design & AI basics, mini projects	New media art basics, artwork production
6 months	UX/UI, marketing, company collaboration	Generative art, team exhibition
9 months	XR contents, internship, mid-term showcase	International collaboration, exhibition design
12 months	Global projects, career & start-up connections	Master project, Jeju + Europe exhibitions

Program Highlights

- Flexible terms: 3 / 6 / 9 / 12 months
- Practical & Creative dual tracks
- Exhibitions at Halla Digital Art Museum
- Company projects, internships, start-up workshops
- Certificate & Digital Badge awarded
- Global networking with international students

Outcomes

- Portfolio: Works recognized in companies & art festivals
- Career: Internship & projects → global job opportunities
- Creation: Participation in international exhibitions
- Certificate: Digital Arts & Innovation Certificate

✓ Non-Curricular Education Course

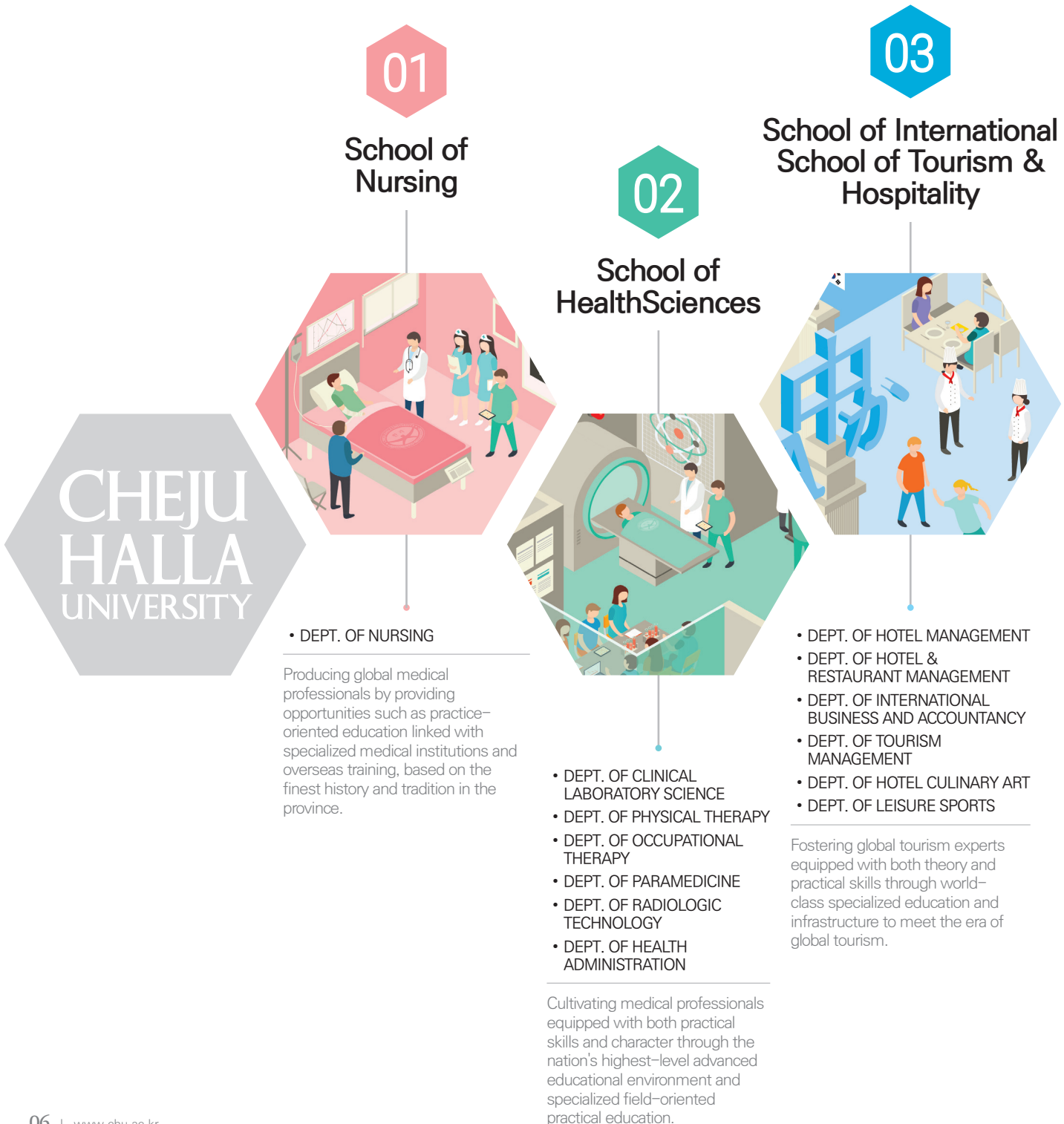
- Various customized Korean language and culture courses: Language **Education Center**, etc
- Professional technology training and qualification acquisition process: Caregiver qualification, Professional Chef qualification, etc.
- International forums, seminars, workshops, and training courses: Jeju Forum, ASEAN Council of Teachers (ACT) training, etc.
- International student camps and academic conferences linked to specialized activities and experience programs.

✓ Joint Linked Courses with Overseas Universities

- CHU – Malaysia JUC Smart Farm Curriculum [**DEPT. OF ENVIRONMENTAL HORTICULTURE**]
- CHU – Nankai University (China) School of Economics "2+2" Dual Degree [**DEPT. OF INTERNATIONAL BUSINESS AND ACCOUNTANCY**]
- Tashkent International University 2+2 Global Joint Degree
- Hefei Preschool Education College (China) 2.5+0.5 Curriculum [**DEPT. OF MUSIC**]

World-Class University Departments

- Active exchange with prestigious universities in the US, UK, China, etc.
- Ranked 1st in the number of overseas employed graduates among colleges nationwide (2012–2014).



04

School of Social Welfare



- DEPT. OF SOCIAL WELFARE
- DEPT. OF EARLY CHILDHOOD EDUCATION
- DEPT. OF SOCIAL WELFARE

Cultivating experts in social welfare and early childhood education by teaching professional knowledge and skills necessary for practicing humanity and promoting welfare for a harmonious society.

05

School of AI Convergence



- DEPT. OF BROADCASTING & FILM
- DEPT. OF ARTIFICIAL INTELLIGENCE ENGINEERING
- DEPT. OF INDUSTRIAL DESIGN
- DEPT. OF ARCHITECTURAL DESIGN
- DEPT. OF COMPUTER INFORMATION
- DEPT. OF COMPUTER MULTIMEDIA
- DEPT. OF INTERDISCIPLINARY STUDIES

Cultivating digital convergence experts who will lead the future as the true leaders of the smart era.

06

School of Life Science & Resources



- DEPT. OF EQUINE RESOURCE MANAGEMENT
- DEPT. OF EQUINE MANAGEMENT SCIENCE
- DEPT. OF ENVIRONMENTAL HORTICULTURE

Cultivating Korea's No. 1 global talents in the horse industry and smart horticulture experts who create the healing tourism industry.

07

School of Humanities and Arts



- DEPT. OF MUSIC
- DEPT. OF BEAUTY ART
- DEPT. OF TOURISM & ENGLISH
- DEPT. OF TOURISM & CHINESE
- DEPT. OF TOURISM & JAPANESE

Cultivating professionals in the humanities and arts equipped with creativity and expertise.



01

School of Nursing

Bright future and a healthy society

We are producing nursing professionals who can meet the demands of the globalized knowledge-information age through a substantial curriculum for your bright future and a healthy society, and are expanding opportunities for overseas study and employment after graduation.

Our Strengths

- 4-year course Nursing Department
- Operation of a unique integrated curriculum by introducing PBL (Problem-Based Learning) for the first time nationwide
- Systematic education linked with the Halla-Newcastle PBL Education Research Institute
- Education and practice linked with the Halla-Stony Brook Emergency Medical Education Center
- Establishment of a pleasant educational environment and state-of-the-art experiment/practice equipment
- Securing of faculty members in the major field with abundant experience in overseas study and industry careers
- Achieving the highest level of employment rate nationwide every year
- Highest level of National Examination passing rate nationwide

Professional Nursing Education with International Competitiveness

- Operation of special programs for cultivating global talent
- Operation of student practice exchange and internship programs with the School of Nursing at Stony Brook University (SUNY), USA
- Academic exchange with the University of Newcastle, Australia

Operation of Halla-Newcastle PBL Education Research Institute

- Research and application of PBL (Problem Based Learning) educational methods
- PBL teaching method education for internal/external professors and consultation research support
- Hosting of international academic symposiums
- Publication of international academic journal (JPBL)



Professional medical personnel equipped with both theory and practical skills

DEPT. OF NURSING



Cultivating excellent nursing talent including students from Burundi, Africa



02

School of Health Sciences

As a leading role in Medical Korea within the world!

Cheju Halla University School of Health Sciences aims for global standards beyond the domestic level with the nation's highest level of cutting-edge educational environment and specialized educational methods.

Our Strengths

- Operation of major intensive courses for a Bachelor of Health Science degree
- Highest level of National Examination passing rate and employment rate nationwide
- Establishment of industry-academia networks among large medical institutions within the province and the metropolitan area
- Establishment of state-of-the-art educational facilities and equipment
- Application of various educational methods such as Learning 5.0, S-PBL, NCS, Open courseware, etc.
- Provision of overseas training and study abroad opportunities for those with excellent foreign language skills
- Education and practice linked with the Halla-Stony Brook Emergency Medical Education Center
- Operation of various educational programs linked with the Medical Welfare Education Research Institute



Cultivating health and medical professionals at the highest level nationwide through field practice-centered education

DEPT. OF CLINICAL LABORATORY SCIENCE



DEPT. OF PHYSICAL THERAPY



DEPT. OF OCCUPATIONAL THERAPY



DEPT. OF PARAMEDICINE



DEPT. OF RADIOLOGIC TECHNOLOGY



DEPT. OF HEALTH ADMINISTRATION



03

School of International Tourism & Hospitality

Our Strengths

- Connection to employment through the operation of specialized industry-academia joint education programs with tourism industries, such as hotel and food service sectors, within and outside the province
- Possibility of acquiring a bachelor's degree through the opening of a bachelor's degree course
- Securing of faculty members in the major field with abundant experience in overseas study and industry careers
- Establishment of a cutting-edge educational environment in the tourism field through a practical work-integrated education building exclusively for the Division of International Tourism & Hotel Management (lobby on 1st floor, 6 floors above ground / Total floor area of 24,700m²)

Major Overseas Partner Universities

- USA | Stony Brook University
- Australia | The University of Newcastle
- Japan | Beppu University, Tama University
- China | Nankai University, Hefei University, Ocean University of China, Fudan University, Communication University of China, Northeast Electric Power University, Yanbian University, Anhui Vocational College of Industry & Commerce, Shijiazhuang Vocational College of Finance & Economics, Beijing Changping Health School, Beijing Tourism College, Qingdao Ocean University, Yantai Labor University, Wuxi University, etc.
- Uzbekistan | Andijan State Institute of Foreign Languages



Sending Jeju's talent out into the world,
Bringing world-class talent to Jeju.
Cultivating global tourism leaders

DEPT. OF HOTEL MANAGEMENT



DEPT. OF HOTEL&RESTAURANT MANAGEMENT



DEPT. OF INTERNATIONAL BUSINESS AND ACCOUNTANCY



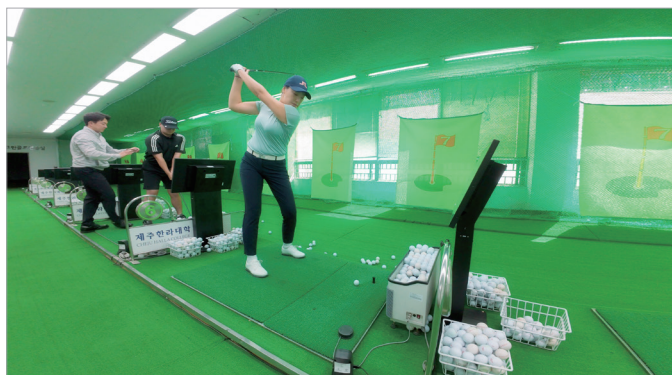
DEPT. OF TOURISM MANAGEMENT



DEPT. OF HOTEL CULINARY ART



DEPT. OF LEISURE SPORTS



04

School of Social Welfare

Our Strengths

- Field-customized curriculum
 - Development and operation of subjects customized for field consumers
 - Provision of various field practice opportunities (social welfare facilities, school counseling offices, early childhood education institutions, etc.)
 - Activation of practical experience and field experience through major clubs
- Excellent Faculty
 - Securing of faculty members in specialized fields with abundant experience in overseas study and industry careers
 - Advisor system equipped with field experience and professionalism
- Specialized Programs
 - Student-customized mentoring system

- Special curriculum for acquiring certificates
- Community-linked volunteer activities and projects
- Activation of employment capability reinforcement programs

Professional Manpower Training Program

- Cultivating social service professionals equipped with public nature
 - Cultivating personnel providing education services for local community and welfare
 - Producing customized professionals in social welfare facilities, school counseling offices, early childhood education fields, and psychology and case management fields



Cultivating professionals in social welfare, early childhood education, and counseling who create a stepping stone of hope for a healthy and harmonious world.

DEPT. OF SOCIAL WELFARE



DEPT. OF EARLY CHILDHOOD EDUCATION



DEPT. OF SOCIAL WELFARE



05

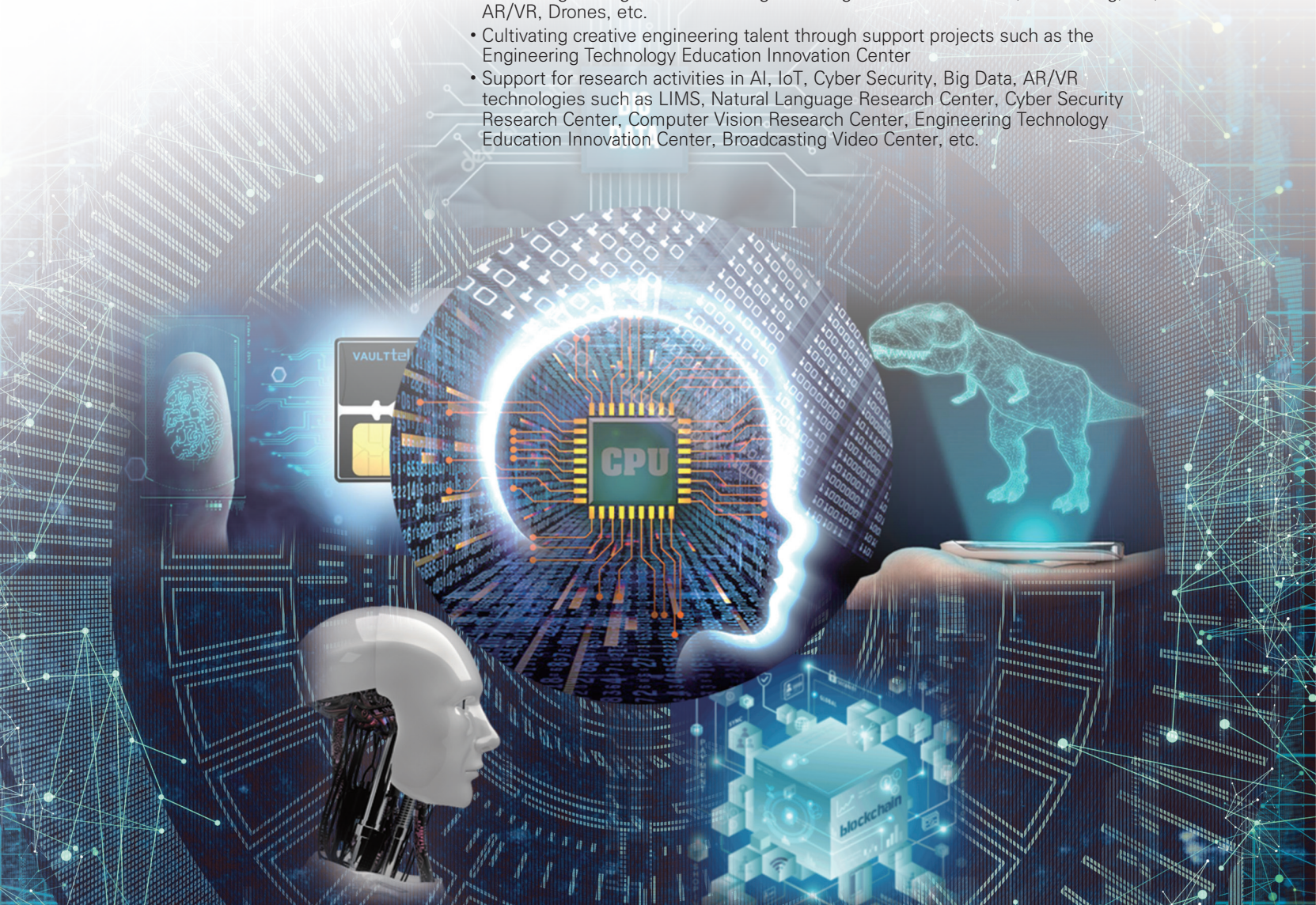
School of AI Convergence

Our Strengths

- Cultivating industry-customized ordered manpower with leading industries
- Operation of industry-customized 'Field Practice', practice-centered 'Capstone Design', and online/offline blended learning methods
- Operation of 4-year bachelor's degree courses for Department of Broadcasting & Video, Department of Artificial Intelligence, and Department of Industrial Design
- Selected for the Demand-Customized Growth Industry-Academia-Research Cooperation Leading University Promotion Project (LINC 3.0)
- Selected for the Junior College Innovation Support Project
- Selected for the Creative Convergence Engineering Talent Training Support Project
- Reinforcement of global talent training education – Invitation of foreign professors, reinforcement of 1 person 1 foreign language acquisition education
- Granting opportunities for study abroad and training at sister universities including SUNY (USA), University of Newcastle (Australia), Nankai University (China), etc.
- Support for employment in overseas industries such as Japan, Australia, Singapore, etc.

Specialization in IT Convergence Technology New Growth Engine Industry Fields

- Implementation of specialized education for new technology convergence in AI, Big Data, Cyber Security, and IoT fields
- Cultivating strategic talent in new growth engine fields such as AI, 3D Printing, IoT, AR/VR, Drones, etc.
- Cultivating creative engineering talent through support projects such as the Engineering Technology Education Innovation Center
- Support for research activities in AI, IoT, Cyber Security, Big Data, AR/VR technologies such as LIMS, Natural Language Research Center, Cyber Security Research Center, Computer Vision Research Center, Engineering Technology Education Innovation Center, Broadcasting Video Center, etc.



Cultivating creative convergence technical experts who will lead the architectural design industry and advanced information technologies such as AI, Big Data, Cyber Security, and IoT, equipped with global competitiveness for the future!

DEPT. OF BROADCASTING & FILM



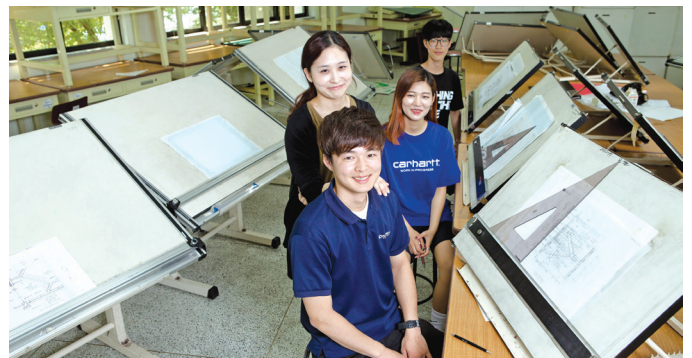
DEPT. OF ARTIFICIAL INTELLIGENCE ENGINEERING



DEPT. OF INDUSTRIAL DESIGN



DEPT. OF ARCHITECTURAL DESIGN



DEPT. OF COMPUTER INFORMATION



DEPT. OF COMPUTER MULTIMEDIA



DEPT. OF INTERDISCIPLINARY STUDIES



06

School of Life Science & Resources

Our Strengths

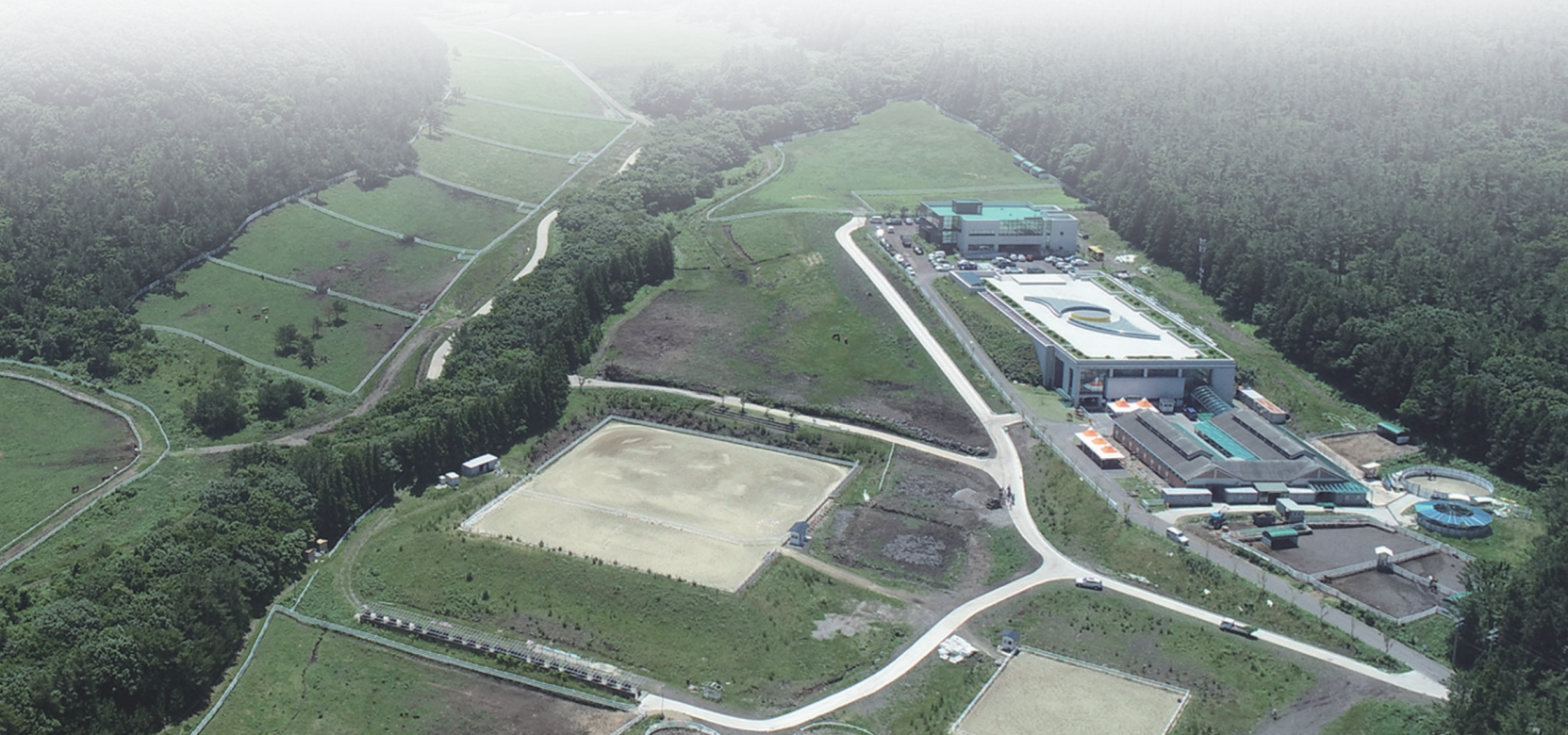
- The only 4-year bachelor's course department related to the equine industry in the country
- Education on the overall equine industry including horse production, breeding, training, horseback riding, horse racing, rehabilitation riding, shoeing, etc.
- Possibility of cultivating field-centered talent by parallelizing 4 years of field practice at production ranches, breeding ranches, riding grounds, racecourses, etc., within Jeju Island
- Cultivating field-centered talent to lead the smart farming and healing industry ecosystem in the era of the 4th Industrial Revolution

Specialized Education in the Equine Industry Field, a National New Growth Engine

- Equine industry highlighted as a new leisure industry following the increase in national income
- Establishment of a new paradigm for Korea's agriculture/livestock industry and leisure industry following the enforcement of the Horse Industry Promotion Act in 2011
- Promotion of the government's mid-to-long-term plan for equine industry development
- Designation and support as a specialized training institution for equine industry professionals by the government

Cultivating Smart Horticulture Experts Designing a Healthy and Affluent Life

- Smart Agriculture: Leading future agriculture with automation and precision cultivation system education
- Healing Agriculture: Agriculture for people, education centered on emotional and psychological recovery
- Florist Education: Cultivating professional florists equipped with sensibility and technology
- Cultivating Field Experts: Practice-centered education and support for various certificates



Republic of Korea's No. 1 equine industry professional training institution cultivating the nation's best equine industry experts!

Cultivating smart agriculture experts embracing Jeju's biological resources, smart crop cultivation experts for healing agriculture that saves people, and healing industry expert professional florists!

DEPT. OF EQUINE RESOURCE MANAGEMENT



DEPT. OF EQUINE MANAGEMENT SCIENCE



DEPT. OF ENVIRONMENTAL HORTICULTURE



07

School of Humanities and Arts

Our Strengths

- Operation of a field practice-centered curriculum and faculty composed of experts in humanities and arts fields
- Cultivating global creative convergence talent by expanding partnerships with overseas universities and various cultural arts exchanges, and operating a curriculum reflecting the latest trends
- Securing excellent employment places and improving employment rates through the establishment of industry-academia cooperation systems within and outside the province and global networks



Cultivating Creative Convergence Talent in the Humanities and Arts

DEPT. OF MUSIC



DEPT. OF BEAUTY ARTS



DEPT. OF TOURISM & ENGLISH



DEPT. OF TOURISM & CHINESE



DEPT. OF TOURISM & JAPANESE





Korean Language Institute

Educational Philosophy and Vision

Learning amidst Nature and Culture

- Beyond simple language acquisition, students learn practical Korean while experiencing Jeju’s beautiful nature and Korea’s unique culture.
- We offer a systematic curriculum and a warm community to foster talents with the qualities of global citizens.

Key Features of the Language Institute



Systematic Level-based Education

A subdivided curriculum tailored to student levels from Level 1 to Level 6, operating a 1:1 feedback system.



Learning in Jeju’s Nature

A healing education enjoyed in the pleasant and beautiful campus environment of Jeju, a UNESCO World Natural Heritage site.



Practical Korean Education

Speaking-centered classes and various practical activities to improve real-life communication skills.



Diverse Cultural Experiences

Vivid Korean culture programs learned outside the classroom, such as K-POP, Taekwondo, and Jeju cultural tours.

2026 Admission & Program Guide

1. Regular Program

Category	Details
Class Composition	4 Semesters per year (Spring, Summer, Autumn, Winter) / 10 weeks per semester / 5 days a week (Mon-Fri) / 4 hours per day
Learning Levels	Level 1 (Beginner) ~ Level 6 (Advanced) / Approx. 20 students per class (Small class size)
Tuition Fee	1,400,000 KRW / Semester (Textbook fee separate)

2. 2026 Recruitment Schedule

Semester (Period)	Application Deadline	Acceptance Announcement
Spring (Mar-May)	Fri, Jan 02, 2026	Wed, Jan 14, 2026
Summer (Jun-Aug)	Fri, Apr 03, 2026	Wed, Apr 15, 2026
Autumn (Sep-Nov)	Fri, Jul 03, 2026	Wed, Jul 15, 2026
Winter (Dec-Feb)	Fri, Oct 02, 2026	Wed, Oct 14, 2026

※ Applicants who do not need a Visa (D-4) can apply at any time and enroll mid-semester.

3. Application and Registration Guide

[Admission Guide]

- **Eligibility:** High school graduates or those with equivalent education.
- **How to Apply:** Website (www.chu.ac.kr) or Email (kec@chu.ac.kr).
- **Required Documents:** Application form, Self-introduction, Copy of Passport, ID Photo (3x4), Proof of Final Education (Apostille/Consular Confirmation), Bank Balance Certificate (Over 8 million KRW), Affidavit of Support, etc.
- **Submission:** Submit by mail or in person before the application deadline.

[Costs and Payment (Unit: KRW)]

- **Dormitory Fee:** 240,000 KRW per month (based on double occupancy / 8,000 KRW per day).
- **Deposit:** 50,000 KRW (Refunded upon moving out).
- **Insurance:** Approx. 140,000 KRW / 6 months (Mandatory subscription to private medical insurance).
- **Payment Method:** Transfer to the Korean Language Institute designated account (Under student's own name).

4. Professional Faculty

	Qualifications
Korean Language Teacher Qualification	Professional instructors with Korean Language Teacher Level 2 or higher
Degree	Holding a Master's degree or higher
Experience	Abundant teaching experience

	Teaching Method
Customized Education	Providing customized education by level
Communication-focused	Improvement of practical communication skills
Systematic Management	Individual feedback and counseling for learners



International Students Scholarships

Cheju Halla University Entrance Scholarship

Student Class A	TOPIK Level 6 or higher	100% Tuition Waiver
Student Class B	TOPIK Level 5 or higher	80% Tuition Waiver
Student Class C	TOPIK Level 4 or higher	50% Tuition Waiver
Student Class D	TOPIK Level 3 or higher	40% Tuition Waiver

Cheju Halla University RISE Scholarship

- STUDY IN JEJU Global Talent Scholarship
- STUDY IN JEJU Achievement Scholarship
- STUDY IN JEJU Leadership Scholarship

Cheju Halla University Academic Scholarships

- Halla Scholarship, Academic Merit Scholarship, Sibling Scholarship, Service Scholarship, Work-Study Scholarship, Special Outstanding Student Recommendation Scholarship.

International Students Dormitory

Halla Dormitory

- Separate buildings for male and female students.
- Capacity: 414 students (198 Males, 216 Females).
- Room Type: Double occupancy (2 students per room) / Rate: 8,000 KRW per day.
- Modern facilities and pleasant environment.
- Equipped with lounges, shared kitchens, laundry rooms, shower rooms, etc.



Campus Amenities



Cheju Halla Convention Hall Lobby



Gym



Cafe 38



Cheju Halla The Commons



Cheju Halla Convention AB Hall

Student Cafeteria





Cheju Halla University Preliminary Admission Application Form

Personal Information	Name					
	Date of Birth					
	Contact	Phone Number				
		E-mail	@			
	Nationality					
	Gender		<input type="checkbox"/> Female		<input type="checkbox"/> Male	
	Language Proficiency		Korean <input type="checkbox"/> TOPIK Level:		English <input type="checkbox"/> IELTS/TOEFL/Other:	
School Information	Previous School Info	<input type="checkbox"/> High School Graduate	<input type="checkbox"/> Currently Enrolled in University	<input type="checkbox"/> Bachelor's Degree	<input type="checkbox"/> University Graduate	<input type="checkbox"/> Bachelor's Degree
				<input type="checkbox"/> Associate Degree		<input type="checkbox"/> Associate Degree
		Period of Attendance (Year, Month, Day) ~		School Name		Regular School Status <input type="checkbox"/> Regular <input type="checkbox"/> Non-regular
Application Information	Intended Field of Study *Multiple selections allowed		<input type="checkbox"/> School of Nursing <input type="checkbox"/> School of Health Sciences <input type="checkbox"/> School of International Tourism & Hospitality <input type="checkbox"/> School of Social Welfare <input type="checkbox"/> School of AI Convergence <input type="checkbox"/> School of Life Science & Resources <input type="checkbox"/> School of Humanities and Arts			
	Preferred department					
Confirmation of Consent to Collection and Use of Personal Information		I hereby complete and submit the preliminary admission application to your university and agree to the collection and use of my personal information (applicant information, school information, contact information, etc.).				
		<input type="checkbox"/> Agree		<input type="checkbox"/> Disagree		

I wish to attend Cheju Halla University's study-abroad information session, submit a pre-admission application, and receive admissions counseling.

Date: Year ____ Month ____ Day ____

Applicant: _____ (Signature or Seal)



Tuition Fees for Cheju Halla University

Tuition & Registration Guide

- ▶ Application Fee: 20,000 KRW
- ▶ Tuition:

School	Department	Registration amount (won)		Duration	Degree
		1st Semester	From 2nd Semester		
School of Nursing	DEPT. OF NURSING	3,243,000	3,068,000	4 Years	Bachelor
School of Health Sciences	DEPT. OF CLINICAL LABORATORY SCIENCE	3,037,000	2,862,000	3 Years	Associate
	DEPT. OF PHYSICAL THERAPY	3,037,000	2,862,000		
	DEPT. OF OCCUPATIONAL THERAPY	3,037,000	2,862,000		
	DEPT. OF PARAMEDICINE	3,037,000	2,862,000		
	DEPT. OF RADIOLOGIC TECHNOLOGY	3,037,000	2,862,000		
	DEPT. OF HEALTH ADMINISTRATION	3,037,000	2,862,000		
	DEPT. OF HOTEL MANAGEMENT	3,162,000	2,987,000		
DEPT. OF HOTEL&RESTAURANT MANAGEMENT	3,162,000	2,987,000			
DEPT. OF INTERNATIONAL BUSINESS AND ACCOUNTANCY	3,162,000	2,987,000			
School of International Tourism & Hospitality	DEPT. OF TOURISM MANAGEMENT	2,333,000	2,158,000	2 Years	Associate
	DEPT. OF HOTEL CULINARY ART	2,563,000	2,388,000		
	DEPT. OF LEISURE SPORTS	2,667,000	2,492,000		
School of Social Welfare	DEPT. OF SOCIAL WELFARE	3,162,000	2,987,000	4 Years	Bachelor
	DEPT. OF EARLY CHILDHOOD EDUCATION	2,552,000	2,377,000	2 Years	Associate
	DEPT. OF SOCIAL WELFARE	2,552,000	2,377,000	3 Years	

School	Department	Registration amount (won)		Duration	Degree
		1st Semester	From 2nd Semester		
School of AI Convergence	DEPT. OF BROADCASTING & FILM	3,162,000	2,987,000	4 Years	Bachelor
	DEPT. OF ARTIFICIAL INTELLIGENCE ENGINEERING	3,162,000	2,987,000		
	DEPT. OF INDUSTRIAL DESIGN	3,162,000	2,987,000		
	DEPT. OF ARCHITECTURAL DESIGN	3,037,000	2,862,000	3 Years	Associate
	DEPT. OF COMPUTER INFORMATION	2,375,000	2,200,000	2 Years	
	DEPT. OF COMPUTER MULTIMEDIA	2,375,000	2,200,000		
	DEPT. OF INTERDISCIPLINARY STUDIES	2,750,000	2,575,000		
School of Life Science & Resources	DEPT. OF EQUINE RESOURCE MANAGEMENT	2,832,000	2,657,000	4 Years	Bachelor
	DEPT. OF EQUINE MANAGEMENT SCIENCE	2,832,000	2,657,000		
	DEPT. OF ENVIRONMENTAL HORTICULTURE	2,750,000	2,575,000	2 Years	Associate
School of Humanities and Arts	DEPT. OF MUSIC	2,781,000	2,606,000	2 Years	Associate
	DEPT. OF BEAUTY ART	2,775,000	2,600,000		
	DEPT. OF TOURISM & ENGLISH	2,333,000	2,158,000		
	DEPT. OF TOURISM & CHINESE	2,333,000	2,158,000		
	DEPT. OF TOURISM & JAPANESE	2,333,000	2,158,000		

※ The above tuition fees are subject to change according to university regulations.

Study Abroad [D-2-1, D-2-2] Required Documents

No.	Category	Document Name	Details / Remarks
1	University Forms	Application for Admission	University Prescribed Form (download from the Int'l Exchange website on the right)
2		Personal Statement & Study Plan	University Prescribed Form (download from the Int'l Exchange website on the right)
3		Affidavit of Financial Support	Refer to the form
4		Personal Information Consent Form	Refer to the form
5	Academic Documents	Proof of Education	<ul style="list-style-type: none"> • Freshmen: (Submit one of the following) <ul style="list-style-type: none"> - Copy of High School Diploma OR Original Certificate of Graduation - Original Certificate of Expected Graduation • Transfer Students: <ul style="list-style-type: none"> ① Related documents from 4-year University or College (Submit one): <ul style="list-style-type: none"> - Original Certificate of Graduation - Original Certificate of Enrollment OR Original Certificate of Completion (2+ years) - Original Certificate of College Graduation ② Original High School Certificate of Graduation (Waived for College graduates) <ul style="list-style-type: none"> ※ Apostille or Consular Confirmation required
6		Academic Transcript	<ul style="list-style-type: none"> • Freshmen: <ul style="list-style-type: none"> - Original High School Transcript (All grades) • Transfer Students: <ul style="list-style-type: none"> - Original Transcript from previous university AND Original Notarized Translation (Korean or English) (1 copy each) ※ Apostille or Consular Confirmation required
7	Nationality Documents	ID & Proof of Foreign Nationality	<ul style="list-style-type: none"> • Alien Registration Card (for those residing in Korea), National ID card • Copy of Passport OR Copy of Citizen ID, depending on domestic/international residency status (Inquire at Int'l Exchange Office)
8		Parents' ID	<ul style="list-style-type: none"> • Copy of Parents' Passport OR National ID (Translated & Notarized)
9		Certificate of Family Relations (Standard: Applicant)	<ul style="list-style-type: none"> • Certificate issued by foreign government verifying family relations (e.g., Hukou/ Family Register) (Note: If no official family register exists, submit Birth Certificate AND Parents' Marriage Certificate together to prove relationship) • If proof of divorce, death, remarriage, or single status is needed, submit relevant documents (e.g., Divorce Certificate, Death Certificate, Single Parent Certificate)
10	Language Proficiency	Language Proficiency Proof	<ul style="list-style-type: none"> • Submit designated documents (Originals within 2 years of application date only) ※ Substitutions or waivers available depending on visa status and screening type
11	Financial Documents	Bank Balance Certificate (Proof of Financial Ability) - Bank balance of approx. 16 million KRW (Applicant or Parent) (For College or Linked Curriculum: 8 million KRW)	<ul style="list-style-type: none"> • Issued within 1 month of the application deadline • Domestic or overseas bank balance certificate under the name of the applicant or parent (Note: Certificates with an expiration date are valid until that date; otherwise, valid for 6 months from issuance) • Additional documents may be required per visa residency guidelines



Language Standards & Admission Qualifications

Category		Requirements												
Nationality Requirements(Common)		<ul style="list-style-type: none"> • Both the applicant and parents must be foreign nationals. (Recognized if both parents and student acquired foreign nationality before the student began the curriculum corresponding to Korean high school). 												
Academic Requirements	Freshman Admission	<ul style="list-style-type: none"> • Foreigners who have completed all primary and secondary education courses (elementary, middle, high school) equivalent to Korean education, either in Korea or abroad. • Limited to those who completed courses at regular schools officially recognized by the laws of the country where the school is located. (Home schooling, lifelong education courses, etc. are not recognized) • Qualifications acquired through qualification exams (e.g., GED in US/Canada, Self-Taught Higher Education Exam in China) are not recognized. • Qualifications acquired through cyber learning are not recognized. 												
	Transfer Admission	<ul style="list-style-type: none"> • Foreigners who have completed primary, middle, and high school education equivalent to Korean education, either in Korea or abroad. • Only regular school courses recognized by the relevant laws of the country where the school is located are recognized. (Home schooling, lifelong education courses, etc. are not recognized) • Qualifications acquired through qualification exams (e.g., GED in US/Canada, Self-Taught Higher Education Exam in China) are not eligible for application. • Those who have completed the entire curriculum of the 1st year at a domestic/overseas junior college or university; graduates of junior colleges; those who have completed the entire curriculum of the 2nd year at a university; or those recognized as having equivalent academic background by other laws. • Those who have completed 2 semesters (1st year) or 4 semesters (2nd year) at a domestic/overseas university (excluding seasonal semesters) and acquired the prescribed credits. • Academic background from cyber learning is not recognized. 												
Language Requirements (Common)		<p>※ Language Proficiency Standards</p> <p>1. Korean Language Standards:</p> <table border="1" data-bbox="409 1062 1508 1224"> <thead> <tr> <th>Category</th> <th>KIIP (Social Integration Program)</th> <th>TOPIK (Test of Proficiency in Korean)</th> <th>CHU Korean Language Center*</th> </tr> </thead> <tbody> <tr> <td>Associate Degree</td> <td>Completed Stage 2+ or Pre-test 41+</td> <td>Level 2 or higher</td> <td>Completed 1 year or more</td> </tr> <tr> <td>Bachelor's Degree</td> <td>Completed Stage 4+ or Pre-test 81+</td> <td>Level 4 or higher</td> <td>Completed 2 years or more</td> </tr> </tbody> </table> <p>* CHU Korean Language Center: Refers to Korean language courses designated/operated by Cheju Halla University, such as overseas King Sejong Institutes, language institutes at partner universities, overseas global centers, and Korean language courses linked with 3 domestic university language centers.</p> <p>2. English Language Standards:</p> <p>A. Acquisition of scores: TOEFL 530 (CBT 197, iBT 71), IELTS 5.5, CEFR B2, TEPS 601 (NEW TEPS 327), or equivalent scores in nationally recognized English proficiency tests. * However, students holding citizenship from countries where English is the native language, or students who completed secondary/higher education in countries where English is used as the native language, are recognized as meeting the criteria upon submission of proof of completion (e.g., Certificate of Graduation).</p> <p>B. For those applying through partner institutions or special admissions tracks, the agreement (MOU) or specific admission criteria shall apply.</p> <p>3. Other Language Proficiency Standards:</p> <p>A. Deliberated by the International Student Admission Screening Committee in compliance with the 「Standard Guidelines for Processing International Students and Language Trainees」(Ministry of Education) and 「Guidelines for Visa Issuance and Stay Management for International Students」(Ministry of Justice).</p> <p>B. For Government Invitation Scholarship students or Foreign Government Support Scholarship students, the selection criteria and guidelines of the relevant year's program apply.</p> <p>C. For the Global Convergence Talent Track, language standards are replaced by a Certificate of Employment.</p> <p>D. For applicants holding visas allowing study abroad other than the Student Visa (D-2), deliberation by the Foreigner Admission Screening Committee applies.</p> <p>※ Only official scores valid within 2 years of the application deadline are recognized.</p>	Category	KIIP (Social Integration Program)	TOPIK (Test of Proficiency in Korean)	CHU Korean Language Center*	Associate Degree	Completed Stage 2+ or Pre-test 41+	Level 2 or higher	Completed 1 year or more	Bachelor's Degree	Completed Stage 4+ or Pre-test 81+	Level 4 or higher	Completed 2 years or more
Category	KIIP (Social Integration Program)	TOPIK (Test of Proficiency in Korean)	CHU Korean Language Center*											
Associate Degree	Completed Stage 2+ or Pre-test 41+	Level 2 or higher	Completed 1 year or more											
Bachelor's Degree	Completed Stage 4+ or Pre-test 81+	Level 4 or higher	Completed 2 years or more											

※ Interpretations regarding school systems and academic recognition are decided according to relevant regulations.

GLOBAL CHEJU HALLA





CHEJU HALLA UNIVERSITY





2026 CHEJU HALLA UNIVERSITY

38, Halladaehak-ro, Jeju-si, Jeju Special Self-Governing Province, Republic of Korea
Tel 064-741-7575 | Fax 064-747-3989 | www.chu.ac.kr



Homepage



YouTube